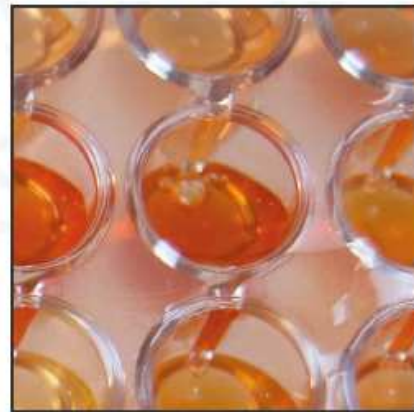
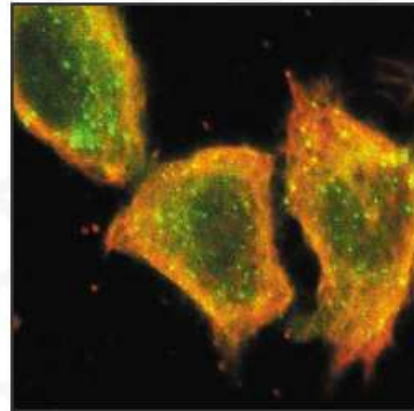


ID.VET
innovative diagnostics



Our Products

ID VET proposes innovative diagnostic tools for the detection of infectious veterinary diseases. In this catalogue, you will find ID VET's ELISA kit range, ID Screen[®], as well as other standard products (antigens for agglutination, Mycobactin J) used in major European surveillance programs.

ID VET distinguishes itself through its innovative strategy in the following areas:

- Progress in the performance of diagnostic tests (sensitivity, specificity, detectability)
- Protocol simplification
- Detection of emerging pathologies.

Through this innovative strategy, the quality of its products and its technical team attentive to client needs, ID VET strives to become the privileged partner of actors in the veterinary diagnostic sector.

Technical Support

ID VET's priority is to provide our clients with efficient, professional customer support.

Please contact us directly by email, phone, or fax for:

- Technical information regarding our products
- Product availability & pricing
- Registration certificates, when necessary
- Information regarding invoices & payment
- Solutions to any questions you may have. You will speak directly with our development and quality control engineers who will do their best to find the appropriate answer.

Telephone: + 33 (0) 4 67 41 49 33
Fax: + 33 (0) 4 67 45 36 95
Email: idvet.info@id-vet.com

Committment to Quality

ID Vet is certified ISO 9001:2000. Our commitment to quality covers all ID VET activities, from Research & Development, to Production, Marketing and Sales.

In order to offer our clients the best products and services, ID VET:

- requires rigorous quality control and traceability of all products and services.
- implicates all employees in its assurance quality program in order to guarantee its success and continued improvement.

Orders

Orders may be placed by telephone, fax, email, or post.

Please send orders to:

Mailing address: 167 rue Medhi Ben Barka – Zone Garosud - 34070 Montpellier, France
Telephone : + 33 (0) 4 67 41 49 33
Fax: + 33 (0) 4 67 45 36 95
Email: idvet.info@id-vet.com

Please provide us with your complete delivery address and your invoicing address, if different.

Overseas customers must ensure that all necessary import permits accompany the order.

Prices

Please contact ID VET for price information and offers.

All prices are exclusive of VAT.

Custom Development & Production

With extensive expertise in the diagnostic field, we will design, develop and manufacture immunoassays to meet your specific requirements.

Upon request, we propose a collaborative approach for the development of specific tools for antibody or antigen detection according to the highest industrial quality standards.

Please contact Philippe Pourquier directly for more information: philippe.pourquier@id-vet.com

Product List

DISEASE	PRODUCT	REFERENCE	PAGE
RUMINANT			
<i>Chlamydia</i>	ID Screen® Chlamydia Indirect	CHLMS	5
<i>Blue Tongue</i>	ID Screen® Blue Tongue Competition	BTC	6
	Blue tongue Positive Control	MRI-BTC	6
	ID Screen® Blue Tongue Milk	BT MILK	6
<i>Neospora caninum</i>	ID Screen® <i>Neospora caninum</i> Indirect	NC	7
	<i>Neospora caninum</i> Positive Control	MRI-NC	7
<i>Paratuberculosis</i>	ID Screen® Paratuberculosis Indirect	PARAS	8
	Paratuberculosis Positive Control	MRI-PARA	8
	Mycobactine J	MYCO	8
EQUINE			
<i>Equine Infectious Anemia</i>	ID Screen® EIA Indirect	AIE	9
<i>Equine Viral Arteritis</i>	ID Screen® Equine Viral Arteritis	EVA	9
<i>Influenza</i>	ID Screen® Influenza A Antibody Competition	FLUAc A	10
	ID Screen® Influenza A Antigen	INFLAg	10
<i>West Nile</i>	ID Screen® West Nile Indirect	WN	10
	West Nile Positive Control	MRI-WN	10

Product List

AVIAN			
Influenza	ID Screen® Influenza N1 Antibody Competition	FLUAc N1	11
	ID Screen® Influenza A Antibody Competition	FLUAc A	11
	ID Screen® Influenza A Antigen	INFLAg	12
Mycoplasma (Antigens for plate agglutination)	<i>Mycoplasma synoviae</i>	MS	12
	<i>Mycoplasma gallisepticum</i> - COMING SOON	MG	12
	<i>Mycoplasma meleagridis</i> - COMING SOON	MM	12
West Nile	ID Screen® West Nile Competition - COMING SOON	WN C	12
PORCINE			
Influenza	ID Screen® Influenza A Antibody Competition	FLUAc A	11
	ID Screen® Influenza A Antigen	INFLAg	12
COMPANION ANIMALS			
Canine Leishmaniasis	ID Screen® Leishmania Indirect	LEISH	13
	Leishmania Positive Control serum	MRI-LEISH	13
ALL SPECIES			
CF Tests	Complement	CPLT	13

Chlamydia

ID Screen® Chlamydia abortus Indirect

Product Description

Product Code CHLMS

Description Indirect ELISA
 Detects antibodies to the Major Outer Membrane Protein (MOMP) of *Chlamydia abortus*.

Applications Bovine, ovine, or caprine sera or plasma

Format 192 reactions.
 2 plates in strips of 8 microwells.

Advantages Results in 90 minutes.

Kit Contents

Reagents	Qty
Coated microplates	2
Concentrated conjugate 10x	3 ml
Positive control	0.5 ml
Negative control	1.0 ml
Dilution buffer 13	60 ml
Dilution buffer 3	60 ml
Wash Concentrate (20X)	60 ml
Substrate solution (TMB)	30 ml
Stop Solution (H ₂ SO ₄ 0.5 M)	60 ml

Blue Tongue

ID Screen® Blue Tongue Competition*

Product Description

Product Code	BTC
Description	Competitive ELISA kit. Detects anti-VP7 antibodies. Standardized to detect the French reference laboratory (CIRAD) reference standard diluted to 1:8.
Applications	Sheep, goat, cattle or buffalo sera.
Format	384 reactions. 4 plates in strips of 16 microwells.
Advantages	Only one washing step. Results in 90 minutes.

*German registration : Zul.-Nr. FLI-B 439

Kit Contents

Reagents	Qty
Microplates coated with vp7	4
Anti-vp7-Po conjugate (10x)	6 ml
Positive control	1 ml
Negative control	1 ml
Dilution buffer 2	60 ml
Wash Concentrate (20X)	60 ml
Substrate Solution	60 ml
Stop Solution (H ₂ SO ₄ 0.5 M)	60 ml

Blue Tongue Positive Control

Product Code :	MRI BTC
Description	1 ml of highly positive ovine serum
Application	To be used as internal reference material for quality control

ID Screen® Blue Tongue Milk*

Product Description

Product Code	BT LAIT
Description	Detects anti-VP7 antibodies in milk samples.
Applications	Sheep, goat, cattle or buffalo sera.
Format	384 reactions. 4 plates in strips of 16 microwells.
Advantages	Results in 90 minutes.

*German registration : Zul.-Nr. FLI-B 449

Kit Contents

Reagents	Qty
Microplates coated with vp7	4
Anti-ruminant conjugate (10x)	6 ml
Positive control	1 ml
Negative control	1 ml
Dilution buffer 3	60 ml
Wash Concentrate (20X)	60 ml
Substrate Solution	60 ml
Stop Solution (H ₂ SO ₄ 0.5 M)	60 ml

Neospora caninum

ID Screen® Neospora caninum Indirect

Product Description

Product Code	NC
Description	Indirect ELISA kit. Detects antibodies directed against <i>Neospora caninum</i> .
Applications	Bovine sera & plasma.
Format	192 reactions. 2 plates (in strips of 8 microwells).
Advantages	Results in 60 minutes.

Kit Contents

Reagents	Qty
Microplates coated with purified <i>Neospora caninum</i> extract	2
Concentrated conjugate 10x	3 ml
Positive control	0,5 ml
Negative control	1 ml
Dilution buffer 2	60 ml
Dilution buffer 4	60 ml
Wash Concentrate (20X)	60 ml
Substrate solution	30 ml
Stop Solution (H ₂ SO ₄ 0.5 M)	60 ml

Neospora caninum Positive Control

Product Code :	MRI NC
Description	1 ml of highly positive bovine serum.
Application	To be used as internal reference material for quality control.

Paratuberculosis

ID Screen® Paratuberculosis Indirect*

Product Description

Product Code PARAS

Description Indirect absorbed ELISA (method described in the OIE recommendations "Manual of Recommended Diagnostic Techniques and Requirements volume III - Paratuberculosis 5B/009". Detects anti-*Mycobacterium avium* subsp. *paratuberculosis* antibodies.

Applications Bovine, ovine, caprine or buffalo sera or bovine milk.

Format 384 reactions.
4 plates in strips of 16 microwells.

Advantages Results in 90 minutes.

*German registration underway: Zul.-Nr. FLI-B 443 (completion expected May 2007).

Kit Contents

Reagents	Qty
Microplates coated with purified Map extract	4
Concentrated conjugate 10x	6 ml
Positive control	1.0 ml
Negative control	1.0 ml
Dilution buffer 6	60 ml
Dilution buffer 3	60 ml
Wash Concentrate (20X)	60 ml
Substrate solution (TMB)	60 ml
Stop Solution (H ₂ SO ₄ 0.5 M)	60 ml

Mycobactine J

Product Code Myco

Description Ferric Mycobactin J is an iron chelated substance used as a supplement in laboratory culture media as a growth promoter for the isolation of mycobactin dependent *Mycobacterium* subsp.

Incorporation into culture medium enables the cultivation of *Mycobacterium avium* subsp. *paratuberculosis* (MAP) in approximately 6 to 8 weeks.

Enhances the growth of fastidious strains of *Mycobacterium* sp., which otherwise could not be isolate



Paratuberculosis Positive Control

Product Code MRI PARAS

Description 1 ml of highly positive bovine serum

Application To be used as internal reference material for quality control.

Equine Infectious Anemia

ID Screen® EIA Indirect

Product Description

Product Code	AIE
Description	Indirect ELISA kit. Detects antibodies directed against the GAG and TM proteins.
Applications	Equine sera.
Format	96 reactions 1 plate (strips of 8 microwells).

Kit Contents

Reagents	Qty
Coated microplates	1
Concentrated conjugate 10x	3 ml
Positive control	0,5 ml
Negative control	0,5 ml
Dilution buffer 8	30 ml
Dilution buffer 5	60 ml
Wash Concentrate (20X)	60 ml
Substrate solution	20 ml
Stop Solution (H ₂ SO ₄ 0.5 M)	20 ml

Equine Viral Arteritis

ID Screen® Equine Viral Arteritis Indirect

Product Description

Product Code	EVA
Description	Indirect ELISA kit. Detects antibodies directed against the Equine Arteritis Virus (EAV).
Applications	Horse sera
Format	192 reactions 4 plates (in strips of 16 microwells).
Advantages	May be used on "cytotoxic sera", difficult to interpret with the seroneutralisation test.

Kit Contents

Reagents	Qty
Coated microplates (even-numbered wells) with a specific EVA peptide.	4
Concentrated conjugate 10x	6 ml
Positive control	1.0 ml
Negative control	1.0 ml
Dilution buffer 2	60 ml
Dilution buffer 3	60 ml
Wash Concentrate (20X)	60 ml
Substrate solution (TMB)	60 ml
Stop Solution (H ₂ SO ₄ 0.5 M)	60 ml

Influenza

Please see pages 11-12.

West Nile

ID Screen® West Nile Indirect

Product Description

Product Code	WN
Description	Indirect ELISA kit. Detects antibodies directed against the West Nile virus.
Applications	Equine sera
Format	96 reactions 2 plates (strips of 16 microwells)

Kit Contents

Reagents	Qty
Microplates coated with an immunocaptured prM-E antigen (control wells for each sample).	2
Concentrated conjugate 10X	3 ml
Positive Control	400 µl
Negative Control	1 ml
Dilution Buffer 11	60 ml
Concentrated Wash Solution (20)	60 ml
Substrate Solution	60 ml
Stop Solution (H ₂ SO ₄ 0,5 M)	60 ml

West Nile Positive Control

Product Code	MRI WN
Description	1 ml of highly positive horse serum
Application	To be used as internal reference material for quality control.
Format	1 ml vial

Influenza

ID Screen® Influenza N1 Antibody Competition

Product Description

Product Code FLUAcN1

Description Competitive ELISA kit.
Detects anti-N1 antibodies of the Influenza virus.

Applications Bird sera.

Format 192 reactions.
2 plates in strips of 8 microwells

Advantages Applicable to any bird species.
Can be used as a DIVA test (differentiating infected from vaccinated animals).
Results in under 2.5 hours .
Adapted to the rapid analysis of large numbers of samples.

Kit Contents

Reagents	Qty
Microplates coated with N1 Antigen	2
Concentrated Conjugate (10X)	3 ml
Positive control	0.5 ml
Negative control	1 ml
Dilution buffer 8	60 ml
Dilution Buffer 3	60 ml
Wash Concentrate (20X)	60 ml
Substrate Solution	60 ml
Stop Solution (H ₂ SO ₄ 0.5 M)	60 ml

ID Screen® Influenza A Antibody Competition*

Product Description :

Product Code FLUAcA

Description Competitive ELISA kit.
Detects anti-nucleoprotein (NP) antibodies of the Influenza A virus.

Applications Bird, pig and horse sera.

Format 192 reactions.
2 plates in strips of 8 microwells.

Advantages Applicable to avian, porcine & equine species.
Results in under 2 hours.
Adapted to the rapid analysis of large numbers of samples.

Kit Contents:

Reagents	Qty
Microplates coated with the NP.	2
Concentrated Conjugate (10X)	1.5 ml
Positive control	0.5 ml
Negative control	1 ml
Dilution buffer 3	60 ml
Dilution buffer 8	60 ml
Wash Concentrate (20X)	60 ml
Substrate solution	60 ml
Stop Solution (H ₂ SO ₄ 0.5 M)	60 ml

*German registration underway: Zul.-Nr. FLI-B 438.
(completion expected May 2007).

Influenza

ID Screen® Influenza Antigen A

Product Description

Product Code	INFLAg
Description	Captured ELISA kit. Detects the nucleoprotein (NP) of the Influenza A virus.
Applications	Brocho-pulmonary liquids from pigs, horses and birds. Bird cloacae swab samples. Bird faeces.
Format	192 reactions. 2 plates (96 individual wells).
Advantages	Results in less than an hour. Adapted to the rapid analysis of a large number of samples. Efficient and robust on complex samples (faeces, cloacae swabs) which can generate false positive results with immunochromatography.

Kit Contents

Reagents	Qty
Microplates coated with a Mab anti-NP (96 individual wells).	2
Concentrated Conjugate (10X)	3 ml
Positive control	2x1 ml
Negative control	2x1 ml
Dilution buffer 2	2 x 60 ml
Wash Concentrate (20X)	60 ml
Substrate solution	60 ml
Stop Solution (H ₂ SO ₄ 0.5 M)	60 ml

Mycoplasma

Mycoplasma synoviae antigen for rapid plate agglutination

Product Code	MS
Description	Suspension of inactivated and stained suspension of <i>Mycoplasma synoviae</i> to be used for serum plate agglutination
Applications	Bird sera
Format	10 ml-vial

Coming Soon :

- *Mycoplasma gallisepticum* (MG) and *Mycoplasma meleagridis* (MM) for serum plate agglutination
- ID Screen® West Nile Competition: Competitive ELISA for the detection of anti-West Nile antibodies in bird and horse sera.

Porcine

Influenza: Please see pages 11 – 12.

Canine Leishmaniasis

ID Screen® Leishmania Indirect

Product Description

Product Code	LEISH
Description	Indirect ELISA kit. Detects antibodies directed against <i>Leishmania infantum</i> .
Applications	Canine sera
Format	96 reactions 1 plate (in strips of 8 microwells).
Advantages	Results in less than 2 hours : particularly rapid and easy-to-use compared with indirect immunofluorescence.

Kit Contents

Reagents	Qty
Microplates coated with <i>L. infantum</i> purified antigen.	2
Concentrated conjugate 10x	3 ml
Positive control	0,5 ml
Negative control	1 ml
Dilution buffer 11	60 ml
Dilution buffer 3	60 ml
Wash Concentrate (20X)	60 ml
Substrate solution	60 ml
Stop Solution (H ₂ SO ₄ 0.5 M)	60 ml

Positive Control Serum

Product Code	CPLEIS
Description	Highly-positive serum from a naturally-infected dog that produces a positive reaction when analysed by ELISA or indirect immunofluorescence.
Format :	1 ml vial
Application :	To be used as internal reference material for quality control.

All species

Complement

Product Code	CPLT
Description	Freeze-dried fresh Guinea Pig serum
Format	5 ml vial
Application	To be used in all complement fixation tests.

ID.VET
innovative diagnostics

570 rue des Bouissettes

34 070 Montpellier, France

Tel : +33 (0) 4 67 41 49 33

Fax : +33 (0) 4 67 45 36 95

idvet.info@id-vet.com

id-vet.com

