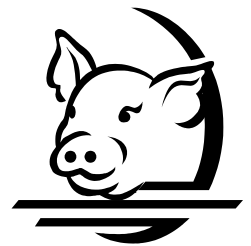


Guildhay Ltd 2006

Products Catalogue



For further information or to place an order please contact us at:
Guildhay Limited, 6 Riverside Business Centre, Walnut Tree Close, Guildford, Surrey, GU1 4UG England
Tel: +44 (0)1483 573727 Fax: +44 (0)1483 574828
Email: sales@guildhay.co.uk Website: <http://www.guildhay.co.uk>



Guildhay Ltd 2006

Introduction

Guildhay Ltd was originally founded in 1977 and was formerly known as Guildhay Antisera Ltd. The name was changed in 1992 when the current owners acquired the company. Guildhay is now part of the Biomedica Group (Vienna, Austria).

Guildhay is a UK based development, manufacturing and marketing company principally operating in the area of antibodies and immunoassays for the Veterinary, Environmental and Human research and diagnostics fields.

Guildhay Manufactures a number of product ranges for veterinary diagnostic application including the FLOCKSCREEN™ and VETSIGN™ ranges. In addition to a wide range of products manufactured by Guildhay, we also distribute products from commercial partners both in the UK and around the world.

Guildhay in addition to test kits also offers a wide range of antibodies, associated immunoassay reagents, contract/custom development and manufacturing services*.

Quality Standards



Quality of products and service is a key feature in Guildhay's development. In April of 1997, the company first achieved accreditation to the ISO9001:1994 quality standard. Since then it has now achieved accreditation to ISO9001:2000 and ISO13485:2003 for design, manufacture and supply of veterinary products and Human medical devices.

Guildhay has also been recognised as under the **Investors in People** National Standard scheme. This UK standard recognises good practice for training and development of people and is integral to Guildhay's overall quality policy to constantly seek to improve our products, their performance and that of the people working at Guildhay.



Products

Guildhay's products are focused around high affinity and specificity antibodies and their application in immunoassays, primarily ELISA techniques.

Guildhay's products fall into 3 main groups:

Veterinary Products

This group is made up of the FLOCKSCREEN™ range of poultry diagnostic kits and the VETSIGN™ kits for other species. The FLOCKSCREEN™ range has since launch established itself as a benchmark in the area of avian serology. This has been due to the ease of use, precision and reproducibility of the results combined with Guildhay offering a number of new analytes to the poultry industry. The VETSIGN™ range currently includes assays for detection of antibodies in pigs to salmonella and the Canine CardioSCREEN™ kit for proANP measurement in dog, proANP being an indicator of heart disease. In addition Guildhay distributes complimentary, novel, high specification veterinary diagnostic products from other producers both in the UK and certain other markets.

Antibodies

Guildhay offers a wide range of antibodies to hormones, steroids, drugs, peptides, immunoglobulins and many other antigens. *See our Antibodies catalogue for further information.

Contract or Custom Services

Guildhay offers a service to develop, to the client's requirements, antibodies and assays. Guildhay also undertakes contract manufacturing of test kits and systems including the unique FUELSTAT™ test for Conidia BioSciences Ltd.

Markets Served

Guildhay sells its products directly from the UK to the majority of the world. Guildhay sells both directly to end-users and via an extensive distributor network covering many countries. See international representation page for details.

Guildhay Ltd 2006

Table of contents

Introduction.....	- 2 -
Poultry Test Kits – FLOCKSCREEN™.....	- 4 -
Duck Tests – FLOCKSCREEN™.....	- 6 -
Porcine tests.....	- 7 -
Bovine Tests.....	- 10 -
Canine Tests.....	- 12 -
Feline Test.....	- 13 -
Reproductive serology Tests.....	- 15 -
Equine Tests.....	- 17 -
SoftSCREEN™.....	- 18 -
International Representation.....	- 19 -
Terms and conditions of sale.....	- 21 -
Index.....	- 23 -

Guildhay Ltd 2006



Poultry Test Kits – FLOCKSCREEN™

FLOCKSCREEN™ is a unique portfolio of screening assays for use in poultry flock management. It employs the latest technology to provide highly specific and sensitive information on the immunological status of poultry to breeders, rearers and producers.

FLOCKSCREEN™ addresses the need of the modern poultry industry professional by providing accurate and timely information, using reliable added value assays, delivering objective and quality assured results.

FLOCKSCREEN™ Avian Influenza ELISA (AI)

Cat. No. V170, V174

184 & 368 tests + controls

The Avian Influenza Antibody indirect ELISA kit provides a rapid, simple and sensitive method of detecting antibodies to AI in chicken or turkey serum.

FLOCKSCREEN™ Avian Rhinotracheitis ELISA (ART/TRT)

Cat. No. V140, V144

184 & 368 tests + controls

The ART Antibody indirect ELISA kit provides a rapid, simple and sensitive method of detecting antibodies to ART in chicken and turkey serum or egg yolk.

FLOCKSCREEN™ Chicken Anemia Virus ELISA (CAV)

Cat. No. V080

184 tests + controls

The CAV Antibody indirect ELISA Kit provides a rapid, simple and sensitive method of detecting antibodies to CAV in chicken serum or egg yolk.

FLOCKSCREEN™ Egg Drop Syndrome ELISA (EDS)

Cat No. V110, V114

184 tests + controls

The EDS Antibody indirect ELISA kit provides a rapid, simple and sensitive method of detecting antibodies to EDS virus in chicken serum or egg yolk.

FLOCKSCREEN™ Infectious Bronchitis Virus ELISA (IBV)

Cat. No. V130, V134

184 & 368 tests + controls

The IBV Antibody indirect ELISA kit provides a rapid, simple and sensitive method of detecting antibodies to IBV in serum or egg yolk.

FLOCKSCREEN™ Infectious Bursal Disease ELISA (IBD)

Cat. No. V090, V094

184 & 368 tests + controls

The IBD Antibody indirect ELISA Kit provides a rapid, simple and sensitive method of detecting antibodies to IBD Virus in chicken serum or egg yolk.

Guildhay Ltd 2006



FLOCKSCREEN™ Infectious Laryngotracheitis ELISA (ILT)

Cat. No. V160, V164

184 & 368 tests + controls

The ILT Antibody indirect ELISA kit provides a rapid, simple and sensitive method of detecting antibodies to ILT in chicken serum.

FLOCKSCREEN™ Mycoplasma gallisepticum ELISA (Mg)

Cat. No. V050, V054

184 & 368 tests + controls

The *Mg* Antibody indirect ELISA Kit provides a rapid, simple and sensitive method of detecting antibodies to *Mg* in chicken serum.

FLOCKSCREEN™ Newcastle Disease Virus ELISA (NDV)

Cat. No. V120, V124

184 & 368 tests + controls

The NDV Antibody indirect ELISA Kit provides a rapid, simple and sensitive method of detecting antibodies to NDV in chicken serum or egg yolk.

FLOCKSCREEN™ Reovirus ELISA (REO)

Cat. No. V150

184 tests + controls

The Reovirus Antibody indirect ELISA kit provides a rapid, simple and sensitive method of detecting antibodies to Reovirus in serum or egg yolk.

FLOCKSCREEN™ Salmonella enteritidis ELISA (Se)

Cat. No. V010

184 tests + controls

The *Se* Antibody indirect ELISA Kit provides a rapid, simple and sensitive method of detecting antibodies to *Se* in chicken serum or egg yolk.

FLOCKSCREEN™ Salmonella typhimurium ELISA (St)

Cat No. V020

184 tests + controls

The *St* Antibody indirect ELISA Kit provides a rapid, simple and sensitive method of detecting antibodies to *St* in chicken serum or egg yolk.



Duck Tests – FLOCKSCREEN™

FLOCKSCREEN™ Duck *Salmonella enteritidis* ELISA (Se)

Cat. No. V710, V714

184 & 368 tests + controls

The Duck Se Antibody ELISA Kit provides a rapid, simple and sensitive method of detecting antibodies to Se in duck serum.

FLOCKSCREEN™ Duck *Salmonella typhimurium* ELISA (St)

Cat. No. V720, V724

184 & 368 tests + controls

The Duck St Antibody ELISA Kit provides a rapid, simple and sensitive method of detecting antibodies to St in duck serum.

Guildhay Ltd 2006



Porcine tests

APP 1-9-11 ELISA

Cat No. VB-P011

192 tests

This is an immunoenzymatic assay for the detection of antibodies against *Actinobacillus pleuropneumoniae* serotypes 1-9-11 in porcine serum.

APP 2 ELISA

Cat No. VB-P013

192 tests

This is an immunoenzymatic assay for the detection of antibodies against *Actinobacillus pleuropneumoniae* serotype 2 in porcine serum.

APP 3-6-8 ELISA

Cat. No. VB-P014

192 tests

This is an immunoenzymatic assay for the detection of antibodies against *Actinobacillus pleuropneumoniae* serotype 3-6-8 in porcine serum.

APP 4-7 ELISA

Cat. No. VB-P015

192 tests

This is an immunoenzymatic assay for the detection of antibodies against *Actinobacillus pleuropneumoniae* serotype 4-7 in porcine serum.

APP 5a-5b ELISA

Cat. No. VB-P012

192 tests

This is an immunoenzymatic assay for the detection of antibodies against *Actinobacillus pleuropneumoniae* serotype 5a-5b in porcine serum.

Haemophilus parasuis ELISA

Cat. No. VB-P018

192 tests

This is an immunoenzymatic assay for the detection of antibodies against *Haemophilus parasuis* (HPS) in porcine serum.

Guildhay Ltd 2006



Influenza H₁N₁ ELISA

Cat. No. VB-P008

192 tests

This is an immunoenzymatic assay for the detection of swine influenza (H₁N₁) antibodies in porcine serum.

Influenza H₃N₂ ELISA

Cat. No. VB-P009

192 tests

This is an immunoenzymatic assay for the detection of swine influenza (H₃N₂) antibodies in porcine serum.

Ovucheck Plasma

Cat. No. VB-C005

92 Tests + controls

This kit is an immunoenzymatic test which provides a simple, reliable and precise measurement of progesterone in plasma or serum from a number of species (cows, horses, dogs, sheep, **PIGS**, goats and rabbits).

Ovucheck plasma is used for oestrus detection and assessment of pregnancy status/luteal function.

PRRS ELISA

Cat. No. VB-P020

474 tests + controls

Cat. No. VB-P021

186 test + controls

This is an immunoenzymatic assay for the detection of porcine reproductive and respiratory syndrome (PRRS) antibodies in porcine serum.

PRRS IIF

Cat. No. VB-P003

160 (4 dilutions) + controls

Cat. No. VB-P004

110 (7 dilutions) + controls

This test is used to detect antibodies to the Porcine Reproductive and Respiratory Syndrome (PRRS) virus in porcine sera.

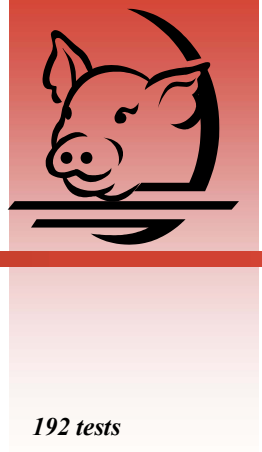
VETSIGN™ Porcine Salmonella antibody ELISA

Cat. No. VP020, VP022

184 & 920 Tests + Controls

The VETSIGN™ Salmonella ELISA kit provides a rapid, simple and sensitive method of detecting antibodies to Salmonella in pig serum or meat juice (skirt muscle).

Guildhay Ltd 2006



TGEV/PRCV ELISA

Cat. No. VB-P025

192 tests

This is an immunoenzymatic assay for the detection and differentiation of antibodies against Transmissible Gastroenteritis Virus (TGEV) and Porcine Respiratory Coronavirus (PRCV) in porcine serum.

Guildhay Ltd 2006



Bovine Tests

Pathasure Enteritis (Calf Diarrhoea) ELISA

Cat. No. VB-B033

30 tests

This kit is an immunoenzymatic assay intended for the detection of rotavirus, coronavirus and *Escherichia coli* (*E. coli*) K99 antigens in bovine faeces.

Dermatophytes

Cat. No VB-P017

10 Tests

In order to directly apply this method on samples taken in the surgery or in field, this kit is easy to perform, giving the possibility to have a diagnosis in a few days. It contains specific nutrients, which facilitate the growth of dermatophytes and selective antibiotics which prevent the growth of non-pathogenic saprophytic mycetes and bacteria. The interpretation relies on the colour pH indicator, which immediately shows the presence of dermatophytes by a colour change, because *Microsporum*, *Trichophyton* and *Epidermophyton* produce alkaline metabolites.

Mycoplasma Bovis ELISA

Cat. No. VB-B020

14 tests

This is an immunoenzymatic assay for the detection of antibodies against *Mycoplasma bovis* (*M.bovis*) in bovine serum.

Ovucheck Milk

Cat. No. VB-C006

92 tests + controls

This kit is an immunoenzymatic test which provides a simple, reliable and precise measurement of progesterone in whole milk from dairy cows. The concentration range covered by the reagents is 1 to 30 ng/ml. Ovucheck Milk is used for oestrus detection and assessment of pregnancy status/luteal function in cows.

Ovucheck Plasma

Cat. No. VB-C005

92 Tests + controls

This kit is an immunoenzymatic test which provides a simple, reliable and precise measurement of progesterone in plasma or serum from a number of species (**cows**, horses, dogs, sheep, pigs, goats and rabbits).

Ovucheck Plasma is used for oestrus detection and assessment of pregnancy status/luteal function.

Guildhay Ltd 2006



Ovucheck Rapid Tube

Cat. No. VB-C003

20 tests

This test is used to measure the level of progesterone in a drop of cow's milk. The quantity of progesterone present is indicated by a change in colour, which is compared with a standard. This test is simple and rapid. It can also be used on the farm.

Ovucheck Rapid Well

Cat. No. VB-C004

31 Tests

This test is used to measure the level of progesterone in a drop of cow's milk. The quantity of progesterone present is indicated by a change in colour, which is compared with a standard. This test is simple and rapid.



Canine Tests

VETSIGN™ Canine CardioSCREEN™ ELISA

Cat. No. VC3167

42 tests (duplicate) + control + standards

This test kit is a competitive EIA (Enzyme Immuno-assay) designed to measure the immunoreactive proANP 31-67 in diluted canine plasma samples. To achieve high specificity the kit incorporates an immunoaffinity purified sheep antibody specific for proANP 31-67. The plate consists of a limiting amount of proANP 31-67 specific antibody (capture antibody) bound to the wells of the plate.

Ovucheck Premate 5

Ovucheck Premate 10

Cat. No. VB-C002

5 tests

Cat. No. VB-C001

10 tests

These kits are semi-quantitative tests for the measurement of progesterone in a drop of plasma or serum. The quantity of progesterone present is indicated by a change of colour, which is compared with high and low progesterone standards.

This kit is quick and simple to use it gives reliable information which allows you to:

1. Plan mating of the bitch at the optimum time.
2. Determine the time of whelping of the bitch.
3. Investigate the causes of infertility of the bitch: anoestrus, silent heats with normal ovulations.



Feline Test

Ovucheck Premate 5

Ovucheck Premate 10

Cat. No. VB-C002

5 tests

Cat. No. VB-C001

10 tests

These kits are semi-quantitative tests for the measurement of progesterone in a drop of plasma or serum. The quantity of progesterone present is indicated by a change of colour, which is compared with high and low progesterone standards.

This kit is quick and simple to use it gives reliable information which allows you to:

- Determine if the queen has ovulated

Guildhay Ltd 2006



Ovine & Caprine Tests

Ovucheck Plasma

Cat. No. VB-C005

92 Tests + controls

This kit is an immunoenzymatic test which provides a simple, reliable and precise measurement of progesterone in plasma or serum from a number of species (cows, horses, dogs, **sheep**, pigs, **goats** and rabbits).

Ovucheck plasma is used for oestrus detection and assessment of pregnancy status/luteal function.



Reproductive serology Tests

Ovucheck Milk

Cat. No. VB-C006

92 tests + controls

This kit is an immunoenzymatic test which provides a simple, reliable and precise measurement of progesterone in whole milk from dairy cows. The concentration range covered by the reagents is 1ng/ml to 30ng/ml.

Ovucheck Milk is used for oestrus detection and assessment of pregnancy status/luteal function in cows.

Ovucheck Plasma

Cat. No. VB-C005

92 Tests + controls

This kit is an immunoenzymatic test which provides a simple, reliable and precise measurement of progesterone in plasma or serum from a number of species (cows, dogs, sheep, pigs, goats and rabbits). Ovucheck plasma is used for oestrus detection and assessment of pregnancy status/luteal function.

Ovucheck Premate 5

Ovucheck Premate 10

Cat. No. VB-C002

5 tests

Cat. No. VB-C001

10 tests

These kits are semi-quantitative tests for the measurement of progesterone in a drop of plasma or serum. The quantity of progesterone present is indicated by a change of colour, which is compared with high and low progesterone standards.

1. This kit is quick and simple to use it gives reliable information which allows you to:
2. Plan matting of the bitch at the optimum time.
3. Determine the time of whelping of the bitch.
4. Investigate the causes of infertility of the bitch: anoestrus, silent heats with normal ovulations.

Guildhay Ltd 2006



Ovucheck Premate Equine

Cat. No. VB-E001

8 tests

Ovucheck® Premate is a semi-quantitative test for the measurement of progesterone in a drop of plasma or serum. The quantity of progesterone present is indicated by a change in color, which is compared with progesterone standards (low, intermediate and high).

This kit is quick and simple to use. It provides useful information:

1. When the mares genital exam is contradictory;
2. When the mares do not show regular estrous cycle during transition period or during the reproduction season;
3. to confirm ovulation;
4. To follow the first trimester of high risk gestations;
5. To maximize the gestation rate during embryo transfer programs;
6. For reproduction of small or miniature mares.

Ovucheck Rapid Tube

Cat. No. VB-C003

20 tests

This test is used to measure the level of progesterone in a drop of cow's milk. The quantity of progesterone present is indicated by a change in colour, which is compared with a standard. This test is simple and rapid. It can also be used on the farm.

Ovucheck Rapid Well

Cat. No. VB-C004

31 Tests

This kit is used to measure the level of progesterone in a drop of cow's milk. The quantity of progesterone present is indicated by a change in colour, which is compared with a standard.

Guildhay Ltd 2006



Equine Tests

Dermatophytes

Cat. No. VB-P017

10 tests

In order to directly apply this method on samples taken in the surgery or in field, this kit is easy to perform, giving the possibility of diagnosis in a few days. It contains specific nutrients, which facilitate the growth of *dermatophytes* and selective antibiotics which prevent the growth of non-pathogenic saprophytic *mycetes* and bacteria. The interpretation relies on the colour pH indicator, which immediately shows the presence of *dermatophytes* by a colour change, because *Microsporum*, *Trichophyton* and *Epidermophyton* produce alkaline metabolites.

Ovucheck Premate Equine

Cat. No. VB-E001

8 tests

Ovucheck® Premate is a semi-quantitative test for the measurement of progesterone in a drop of plasma or serum. The quantity of progesterone present is indicated by a change in color, which is compared with progesterone standards (low, intermediate and high).

This kit is quick and simple to use. It provides useful information:

1. When the mares genital exam is contradictory;
2. When the mares do not show regular estrous cycle during transition period or during the reproduction season;
3. to confirm ovulation;
4. To follow the first trimester of high risk gestations;
5. To maximize the gestation rate during embryo transfer programs;
6. For reproduction of small or miniature mares.

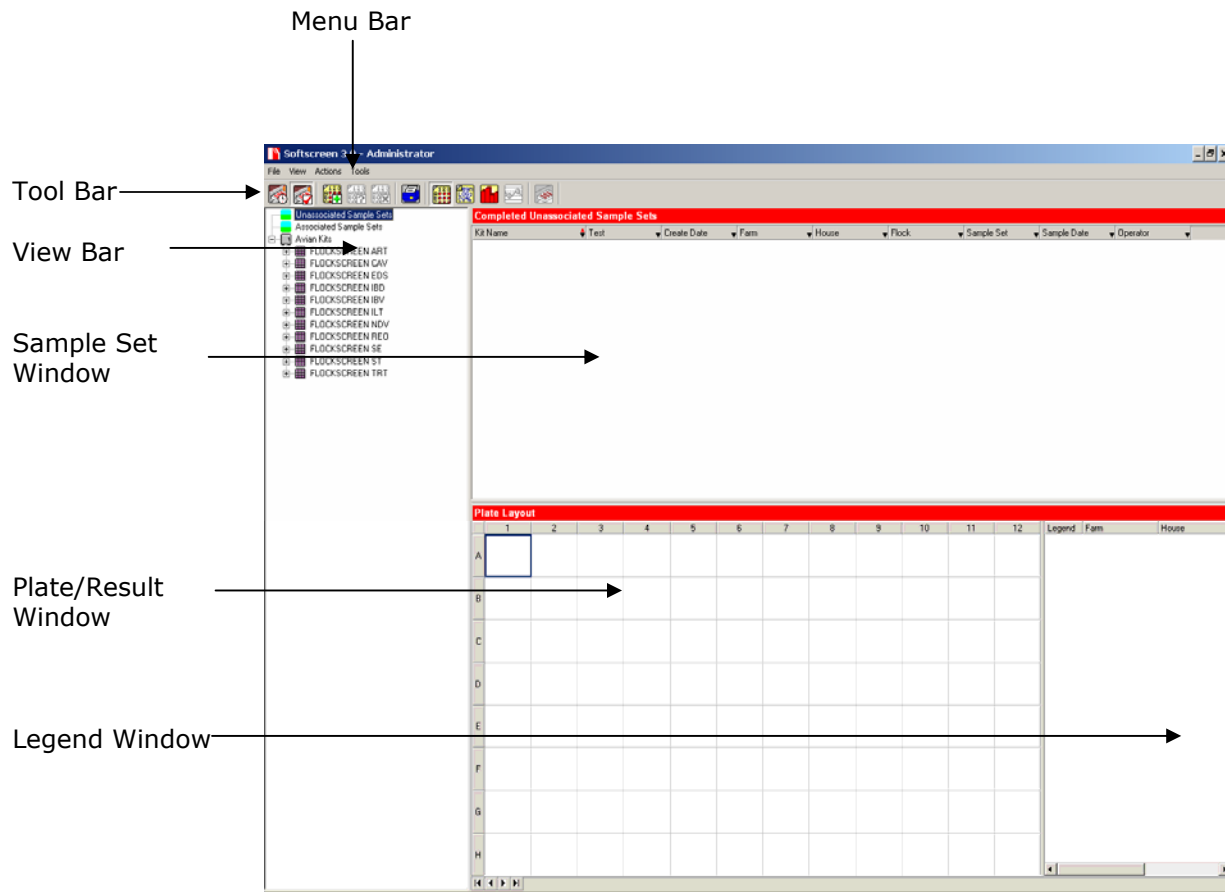
Guildhay Ltd 2006



SoftSCREEN™

SoftSCREEN™ is a Microsoft Windows based program for the capture and analysis of results from samples tested using products in the Guildhay range.

SoftSCREEN™ is capable of managing multiple species and diseases with their associated test(s), providing customised reports and data analysis. It can also run with the majority of micro-titre plate readers.



Guildhay Ltd 2006



International Representation

Australia: Australian Laboratory Services Pty Ltd
Unit 48, 378 Parramatta Road
2140 Homebush NSW
Tel: +61 2 9764 4055
Fax: +61 2 9764 3533
Website: <http://www.austlabservices.com.au>

Austria: Biomedica Medizinprodukte GmbH&CO KG
Divischgasse 4
1210 Wien
Tel: +43 1 291 07 56
Fax: +43 1 290 14 29
Email: sales.biomedica@bmgrp.at

Brazil: Al Tech
Rua Francisco Romeiro
Sobrinho, 137
Cep 04710-180 Sao Paulo
Tel: +55 11 5182 3730
Fax: +55 11 5182 3730
Email: Altech@altech.com.br

Bulgaria: Sofbiolife-Biomedica Ltd
52, Gurko Str. Floor 5,
1000 Sofia
Tel: +359 2 981 30 92
Fax: +359 2 981 18 83
Email: office@sofbiolife.com

Chile: Scientific Line Chile
Antonio Varas 2465 Of. 502
Ñuñoa, Santiago
Tel: 56. 2. 209 88 93
Fax: 56. 2. 453 82 83
Email: scientificlinechile@terra.cl

China: Beijing Gedehai Biotechnology
Room 413, 4th Floor,
No 12 Hondga Bei Road, BDA,
100176 Beijing
Tel: +86 116 263 0617
Email: libarber@mac.com

Croatia: Jasika d.o.o.
Remetinecka cesta 115
10000 Zagreb
Tel: +385 1 65 52 665
Fax: +385 1 653 50 17
Email: jasika@st.htnet.hr

Czech Republic: Biomedica CS Spol. Sr.o.
Cukrovarska 378
19600 Praha 9
Tel: +420 2 83 93 14 85
Fax: +420 2 83 93 04 74
Email: diag@biomedica.cz

France: Laboratoire Service International
1 Bis Allee de la Combe
Le bois Dieu
69380 Lissieu
Tel: +33 4 72 54 82 82
Fax: +33 4 72 54 82 83
Email: richardlsi@aol.com

Germany: Biozol Diagnostica Vertrieb GmbH
Obere Hauptstrabe 10b
85386 Eching
Tel: +49 89 37 99 6666
Fax: +49 89 37 99 6699
Email: info@biozol.de

Hungary: Biomedica Hungaria Kft.
Kékglyó u. 6
1123 Budapest
Tel: +36 1 225 3850
Fax: +36 1 201 2684
Email: biomed@biomedica.hu

India: Avitech Animal Health Pvt Ltd
GP 51 Sector 18
Udyog Vihar
Haryana
122001 Gurgaon
Tel: +91 124 5011147
Fax: +91 124 2314680
Email: avitech@touchtelindia.net

Israel: G.W. Oracel International Ltd.
Moshav Sitriya
Hahita 5
76834 Post Sitriya
Tel: +972 8 9452928
Fax: +972 8 9452899
Email: gidiwei@netvision.net.il

Italy: Lorenzo Cecere
Via Vincenzo Antonioni 5
06132 San Sisto
Tel: +39 075 529 2413
Fax: +39 075 529 2413
Email: cecerel@tiscali.it

Middle East: Lillidale Animal Health LLC
Po Box 44411
Dubai
U. A. E.
Tel: +971 4340 5455
Fax: +971 4340 5355
Email: sales@lillidale.co.uk

(Middle East include: U.A.E, Bahrain, Egypt, Jordan, Lebanon, Oman, Qatar, Saudi Arabia, Syria, Yemen)

Guildhay Ltd 2006



Macedonia: Camellia Farm
Oktomvriska revolucija 28
1300 Kumanovo
Tel: +389 31 426 900
Fax: +389 31 451 901
Email: camellia@mt.net.mk

New-Zealand: Australian Laboratory Services NZ Ltd
PO Box 97923
South Auckland Mail Centre
Auckland
Tel: +64 9 262 4232
Fax: +64 9 262 2588
Email: mark@als.co.nz

Poland: Biomedica Poland Sp. S. o o.
Ul. Raszynska 13
05-500 Piasecany
Tel: +48 22 7375 996
Fax: +48 22 7375 994
Email: biomedica@bmgrp.pl

Romania: S.C. CYBER SRL Romania
Blvd Corneliu Coposu Nr. 7
Bl. 104 SC 2
ET. 4 Ap 45, Sector 3
70941 Bucharest
Tel: +40 21 327 35 53, 326 47 23
Fax: +40 21 320 43 44, 320 47 22
Email: andreea.marasescu@cybermed.ro

Serbia & Montenegro: Biomedica MP d. o. o.
Djuke Dinica br. 10
1000 Beograd
Tel: +386 47 16 300
Fax: +386 47 16 304
Email: biomedicamp@beotel.yu

Slovakia: Biomedica Slovakia s.r.o.
Drobného 27
84102 Bratislava
Tel: +421 2 693 099 01
Fax: +421 2 693 099 08
Email: biomedica@biomedica.sk

Slovenia: Biomedis M.B. d. o. o.
Slokanova 12
2000 Maribor
Tel: +386 2 47 16 300
Fax: +386 2 47 16 30 304
Email: tanja.topovsek@biomedis-mb.si

Thailand: BioLASCO Co., Ltd
154/75 Ruangsiri Village
Sukhumvit Rd., Bangjark
Pharkanong
10260 Bangkok
Tel: +66 2741 5031
Fax: +66 2741 5035
Email: bio@lascothai.com

Guildhay Ltd 2006

Terms and conditions of sale

1. GENERAL

1.1 In these conditions, "the Company" means either ADA Computer Systems Ltd., or Business Internet Systems Ltd, "the User" means the person or Company or its agent who places an order with the Company for the supply of any goods.

1.2 These conditions shall govern and form part of every contract for the sale of goods by the Company. Any variation, cancellation or waiver of these conditions shall not be valid unless agreed in writing and signed by the Company. No servant or agent of the Company other than a director has any authority to vary these conditions.

1.3 Orders are accepted and goods supplied subject to the following express terms and conditions and all other conditions, warranties and representations, express or implied and statutory or otherwise, except as to title, are hereby excluded. No addition thereto or variation there from shall apply unless agreed in writing by the parties.

2. ORDERS

The Company reserves the right (without prejudice to any other remedy) to cancel any uncompleted order or to suspend delivery in the event of any of the User's commitments with the Company not being met. If an order is cancelled by the Company in the aforementioned circumstances, or is cancelled by a User then the User shall indemnify the Company against all loss, costs (including the cost of all labour and materials used and overheads incurred), damages, charges and expenses arising out of the order and the cancellation thereof, (the Company giving credit for the value of any such materials sold or utilised for purposes).

3. EXTRA COST

In the event of any suspension of work through the User's instructions or lack of instructions the Company reserves the right to recover any extra expense thereby incurred by the Company.

4. DISPATCH DATES

Any times for dispatch are to be treated as estimates only. Whilst every endeavour will be made to meet these estimated times for dispatch, the Company shall not be liable in any manner whatsoever for failure to dispatch within the time quoted.

5. CARRIAGE, DELIVERY, RISK, TITLE

- (a) Unless otherwise specified, any prices quoted by the Company exclude delivery charges.
- (b) The risk of loss and/or damage to goods supplied by the Company shall pass to the User upon delivery to the carrier, forwarder or other method of delivery.
- (c) Any damage to goods in transit should be notified to the carrier and the Company within two days of receipt, packing and contents to be held for inspection. If goods are not received by the User within six days of date of invoice the carrier and the Company should at once be informed.
- (d) Notwithstanding the provisions of paragraph (b) above, the ownership of the goods shall remain with the Company until payment in full for all goods and materials has been received by it in accordance with the relevant terms.
- (e) If payment is overdue in whole or in part of immediately upon the commencement of any act or proceeding in which the User's solvency is involved, the Company may (without prejudice to any of its other rights) recover or resell the goods or any of them and may enter upon the User's premises by its servants or agents for that purpose. If the goods are incorporated in or used as materials for other goods before such payment the ownership in the whole of such other goods shall be and remain with the Company until such payment has been made or the other goods have been sold as aforesaid and all the Company's rights hereunder in the manner shall extend to those other goods.

6. PAYMENTS

All accounts are strictly 30 days net, unless otherwise agreed in writing. On failing to make full and prompt payment, the User shall (without prejudice to any other rights of the Company) become liable to pay the Company interest on the due amount at three per cent per annum above the base rate from time to time of Barclays Bank PLC calculated from the date of due payment until the date of actual payment.

7. PAYMENT METHODS

The Company is able to accept payment by cheque, BACS/Electronic Bank Transfer and the following cards.



8. CONSEQUENTIAL LOSS AND DAMAGE

The liability of the Company to the User is limited to enforcement of the product warranties and the Company shall not be liable for any consequential loss alleged by the User.

Guildhay Ltd 2006

9. FINANCIAL CONDITION

If, in the Company's judgement, the User's financial condition does not justify the terms of payment specified, the Company may cancel any unfilled orders unless the User shall, upon written notice, immediately pay for any goods delivered or shall pay in advance for all goods ordered but not delivered or both at the Company's option.

10. ASSIGNS

The contract to which this document relates shall be binding upon and inure to the benefit of the successors and assigns of the entire business and goodwill of either the Company or the User or of that part of the business of either used in the performance of such contract, but shall not be otherwise assignable.

11. LEGAL CONSTRUCTION

These conditions and the contract to which this document relates shall be construed and operate in accordance with English Law.

12. CANCELLATIONS

Credit shall not be issued on any goods without prior authorisation.

13. PRICES

Whilst every endeavour has been made to ensure the accuracy of the prices quoted no responsibility can be accepted for any errors or omissions.

Prices are subject to alteration without notice.

Index

Avian Influenza ELISA (AI).....	- 4 -
Avian Rhinotracheitis ELISA (ART/TRT)	- 4 -
APP 1-9-11 ELISA	- 7 -
APP 2 ELISA.....	- 7 -
APP 3-6-8 ELISA.....	- 7 -
APP 4-7 ELISA.....	- 7 -
APP 5a-5b ELISA	- 7 -
Canine CardioSCREEN™ ELISA	- 12 -
Chicken Anemia Virus ELISA (CAV)	- 4 -
Dermatophytes	- 10 - & 17 -
Egg Drop Syndrome ELISA (EDS).....	- 4 -
Haemophilus parasuis ELISA	- 7 -
Infectious Bronchitis Virus ELISA (IBV)	- 4 -
Infectious Bursal Disease ELISA (IBD)	- 4 -
Infectious Laryngotracheitis ELISA (ILT)	- 5 -
Influenza H ₁ N ₁ ELISA	- 8 -
Influenza H ₃ N ₂ ELISA	- 8 -
Mycoplasma Bovis ELISA	- 10 -
<i>Mycoplasma gallisepticum</i> ELISA (Mg)	- 5 -
Newcastle Disease Virus ELISA (NDV).....	- 5 -
Ovucheck Plasma.....	- 8 -
Ovucheck Milk	- 10 - & 15 -
Ovucheck Plasma.....	- 10 - & 14 - & 15 -
Ovucheck Rapid Tube	- 11 - & 16 -
Ovucheck Rapid Well.....	- 11 - & 16 -
Ovucheck Premate 5	- 12 - & 13 - & 15 -
Ovucheck Premate 10	- 12 - & 13 - & 15 -
Ovucheck Premate Equine.....	- 16 - & 17 -
Pathasure Enteritis (Calf Diarrhoea) ELISA	- 10 -
Porcine Salmonella antibody ELISA.....	- 8 -
PRRS ELISA	- 8 -
PRRS IIF	- 8 -
<i>Salmonella enteritidis</i> ELISA (Se).....	- 5 -
<i>Salmonella typhimurium</i> ELISA (St)	- 5 -
<i>Salmonella enteritidis</i> ELISA (Se)- Duck-.....	- 6 -
<i>Salmonella typhimurium</i> ELISA (St)- Duck-	- 6 -
TGEV/PRCV ELISA	- 9 -

Guildhay Ltd 2006

FOR FURTHER INFORMATION OR TO PLACE AN ORDER PLEASE CONTACT US AT:

Guildhay Limited
6 Riverside Business Centre
Walnut Tree Close
Guildford
Surrey
GU1 4UG England
Tel: +44 (0)1483 573727
Fax: +44 (0)1483 574828
Email: sales@guildhay.co.uk
Website: <http://www.guildhay.co.uk>

